

## A CAR-REPAIR-SHOP ER-MODEL

### Cardinality Constraints:

- The numbers 2:3 next to MECHANICS indicate each mechanic participates in at least 2 and at most 3 instances of HANDLES relationship.
- The numbers 1:2 next to REPAIR\_TYPES indicate each repair-type participates in at least 1 and at most 2 instances of HANDLES relationship.



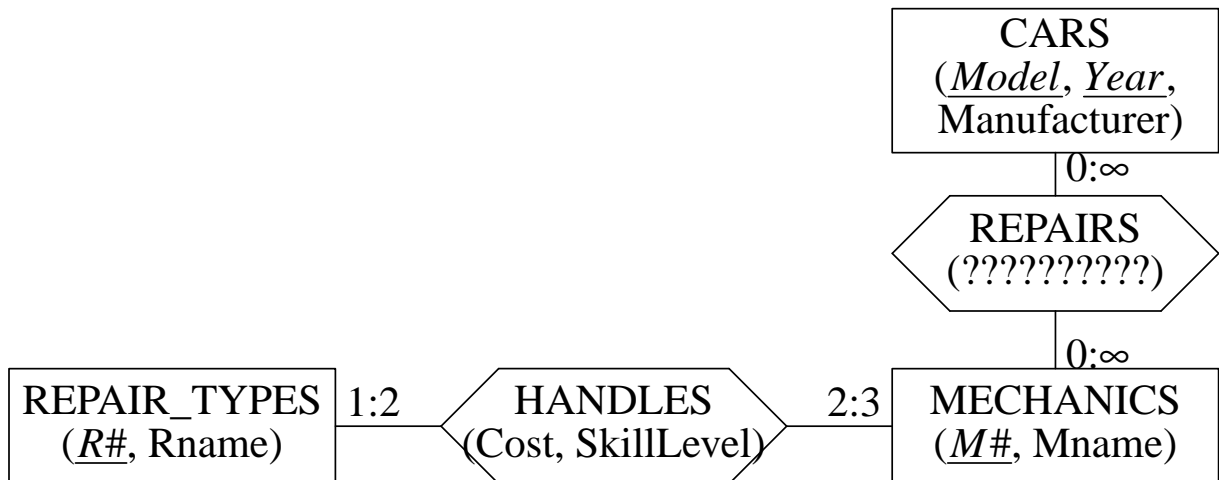
<i>R#</i>	<i>Rname</i>	<i>M#</i>	<i>Mname</i>
R1	Break	M1	John
R2	Tire	M2	Randy
R3	Transmission		

HANDLES:	<i>R#</i>	<i>M#</i>	Cost	SkillLevel
	R1	M1	\$30	1
	R1	M2	\$40	2
	R2	M2	\$10	2
	R3	M1	\$1000	2

### Question:

- ? If we put SkillLevel as an attribute of MECHANICS, how will that change the table for HANDLES? What would it mean if we make it a key of HANDLES-relationship?

## EXTENDING THE CAR-REPAIR-SHOP ER-MODEL



### Questions:

- ? What should be some attributes of REPAIRS?
- ? If we want to schedule/choose repair-work based on availability of mechanics, what attributes are needed and where to put them (justify your answer, including what would go wrong if it was placed somewhere else)?